



Ladies Rain Jacket. EB551



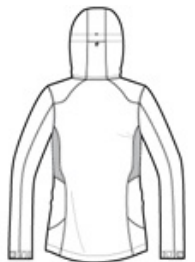
From misty mornings to evening downpours, this fully seam-sealed, completely waterproof colorblock jacket will help keep you dry, warm and protected from whatever Mother Nature throws at you. Highly waterproof and breathable 5K/5K fabric. 5000MM fabric water protection rating, 5000G/M² fabric breathability rating, detachable hood with locking drawcord for adjustability, exterior storm flap with hook and loop closures, front zippered pockets, adjustable tab cuffs with hook and loop closures and an open hem with locking drawcord. Embroidered Eddie Bauer contrast logo on right hem. WeatherEdge® embroidered logo on left sleeve indicates reliable waterproofing and breathable technology. 100% polyester doobby shell, mesh body lining, 100% nylon accents.

CARE INSTRUCTIONS

MACHINE WASH COLD WITH LIKE COLORS GENTLE CYCLE,TUMBLE DRY LOW DO NOT BLEACH DO NOT DRY CLEAN COOL IRON IF NEEDED



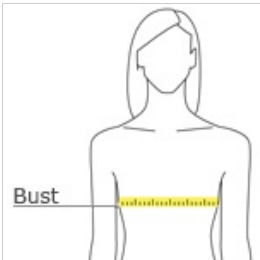
front



back

[Tips For Effectively Screen Printing Polyester Fabrics](#)

HOW TO MEASURE



BUST

Measure under the arm and around the fullest part of the bust with arms down, keeping tape horizontal.

SIZE CHART

	XS	S	M	L	XL	2XL	3XL	4XL
Size	2	4/6	8/10	12/14	16/18	20/22	24/26	28/30
Bust	32-33	34-35	36-37	38-40	41-43	44-46	47-49	50-52

COLOR INFORMATION



Black/Steel
Grey
PMS NTR BLACK
C



Deep Sea
Blue/Dark
Adriatic
PMS 2965C



Radish/Grey
Steel
PMS 207C



White/Grey
Steel
PMS White