



# Eddie Bauer® Ladies Shaded Crosshatch Soft Shell Jacket. EB533



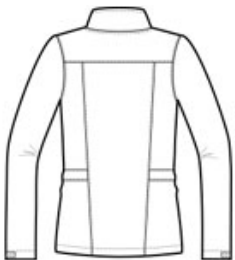
Gear up for the office or a weekend adventure in this soft shell that offers water protection and breathability thanks to its 3K/3K fabric. 3000MM fabric water protection rating. 3000G/M2 fabric breathability rating. Reverse coil zippers, front zippered pockets, adjustable tab cuffs with hook and loop closures and an open hem. Princess seams and embroidered Eddie Bauer contrast logo on right hem. Made of a 100% polyester woven shell bonded to a water-resistant laminated film insert and a 100% polyester fleece.

### CARE INSTRUCTIONS

[Tips For Effectively Screen Printing Polyester Fabrics](#)

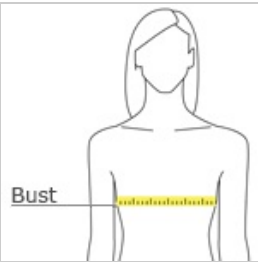


front



back

### HOW TO MEASURE



**BUST**  
Measure under the arm and around the fullest part of the bust with arms down, keeping tape horizontal.

### SIZE CHART

	XS	S	M	L	XL	2XL	3XL	4XL
Size	2	4/6	8/10	12/14	16/18	20/22	24/26	28/30
Bust	32-33	34-35	36-37	38-40	41-43	44-46	47-49	50-52

### COLOR INFORMATION

  
Black  
PMS NTR BLACK

  
Blue  
PMS 2767C

  
Grey  
PMS 419C

  
Purple  
PMS 276C